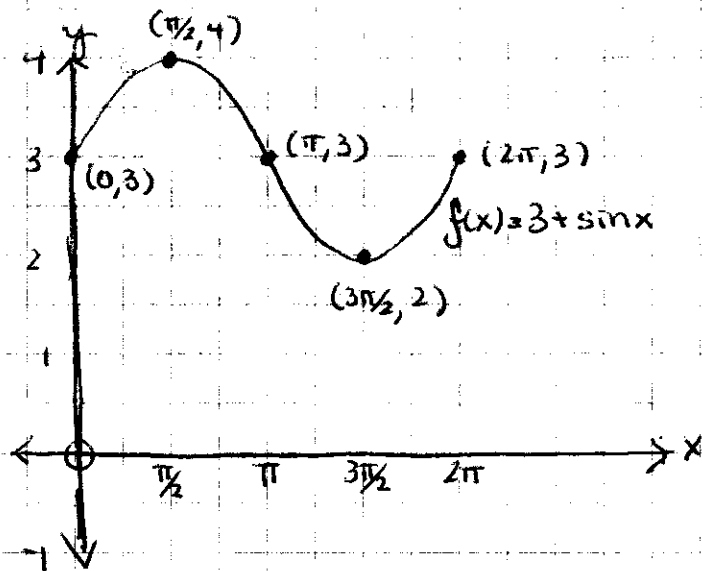


85.3 p. 429 <sup>ed5</sup> on p. 396 <sup>edw</sup>

(2 or 4)

$f(x) = 3 + \sin x$   
vertical shift only

x	y	y' (add 3)
0	0	3
$\pi/2$	1	4
$\pi$	0	3
$3\pi/2$	-1	2
$2\pi$	0	3



(10 or 12)

$g(x) = -2/3 \cos x$

x	y	y' (mult by -2/3)
0	1	$2/3$
$\pi/2$	0	0
$\pi$	-1	$2/3$
$3\pi/2$	0	0
$2\pi$	1	$-2/3$

